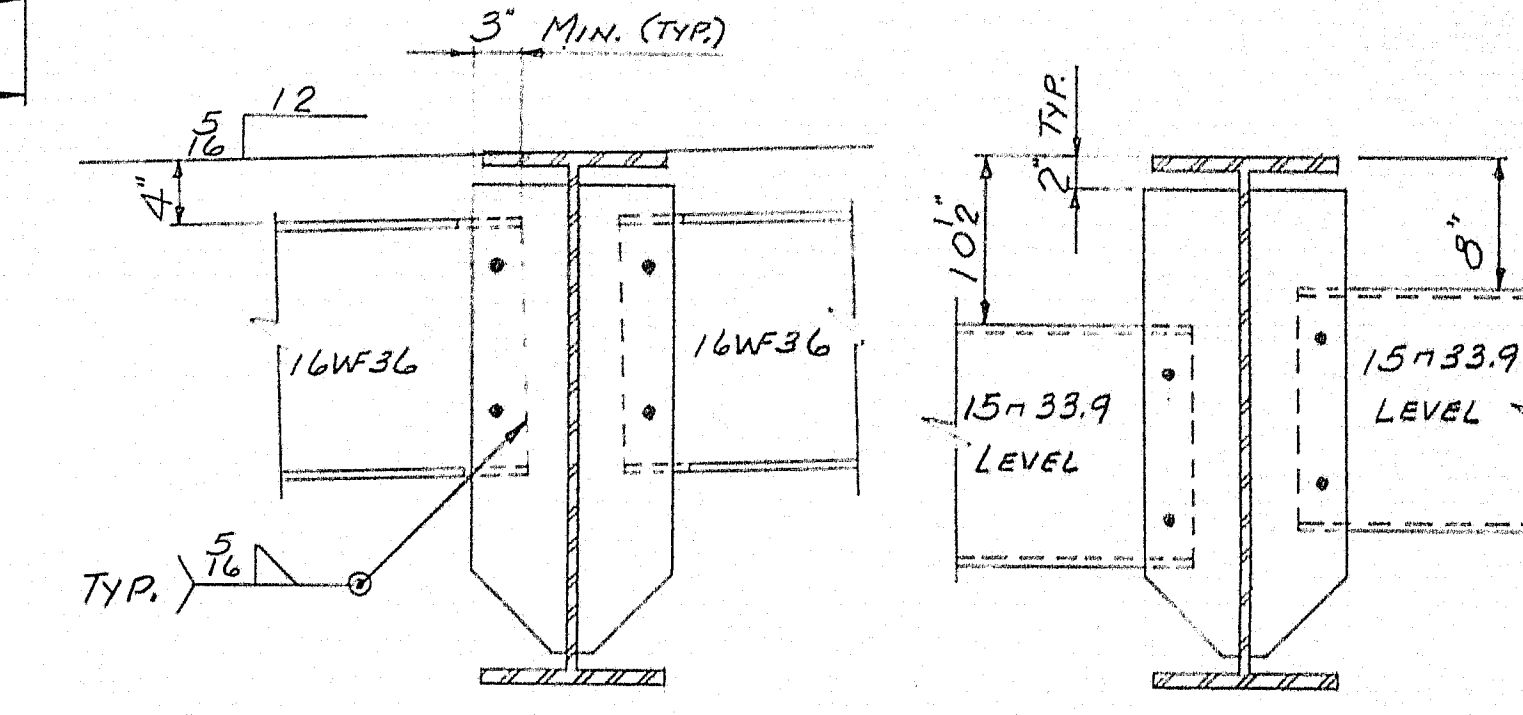


SET STRINGERS TO SLOPE DIAGRAM  
DRWG. B63-202-E2, BEFORE DRILLING  
& REAMING.

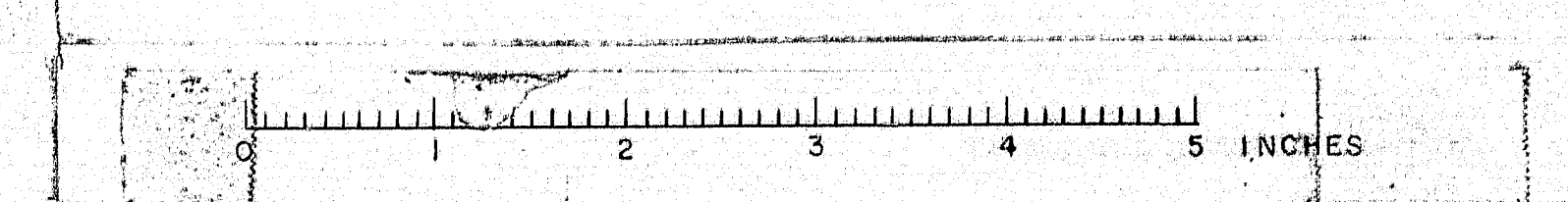


SEE DRWG. #B63-202-E2 FOR GENERAL NOTES

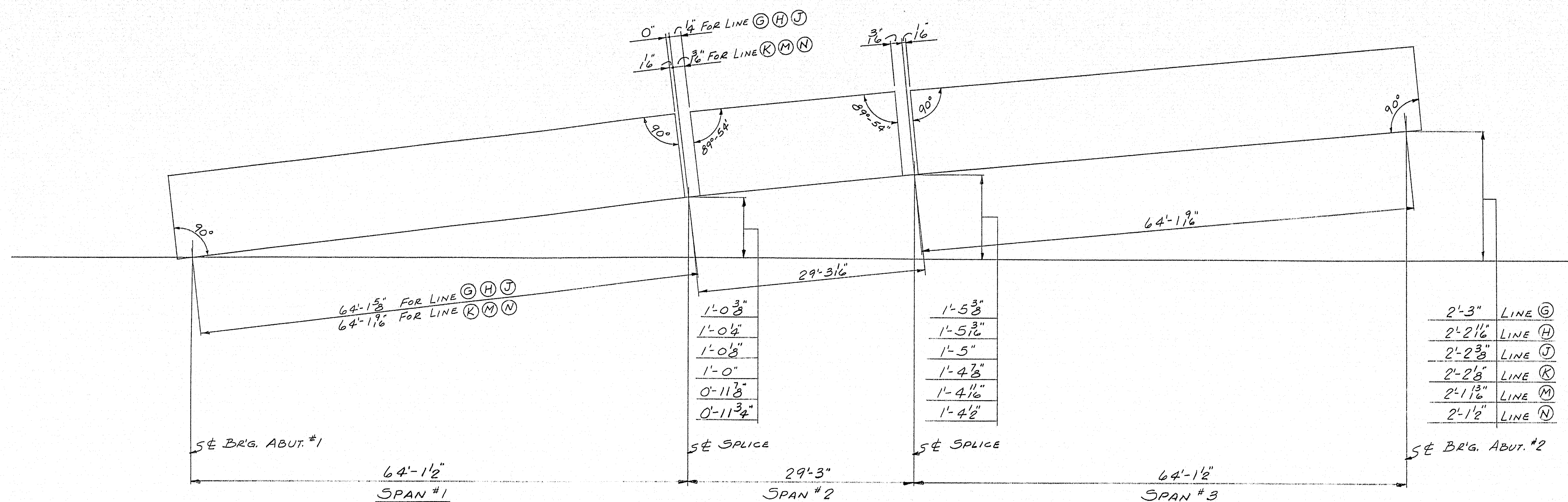
SHOP CONNECTIONS: WELD (E70 ELECTRODE)  
FIELD CONNECTIONS: 3/8" H.S. BOLT  
HOLES: 1/2" &  
PAINT: STATE OF MAINE SPEC'S.

APP'D. 2-12-64

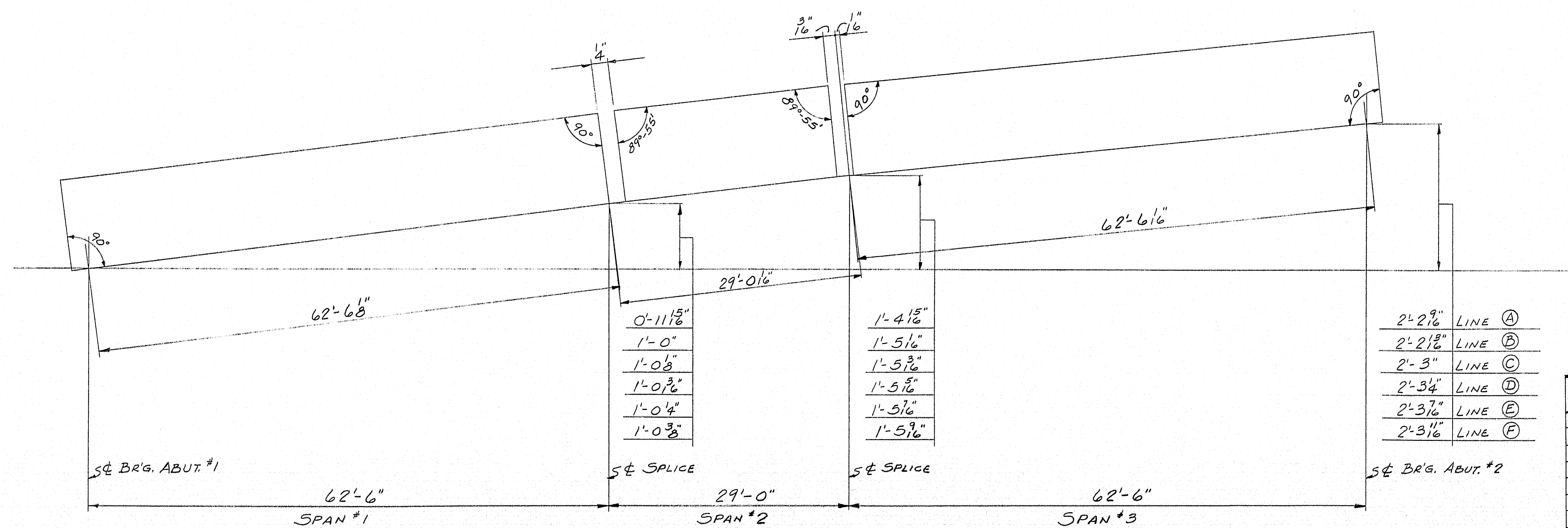
| FRAMING PLANS - SOUTHBOUND & NORTHBOUND  |                 |
|--|-----------------|
| PRINT ISSUE  |                 |
| 3 DIST.  | 2-13-64         |
| 1 SHOP   | 2-13-64         |
| 2 F.A.   | 1-22-64         |
| DRAWN  | 12-26-63 R.A.M. |
| REVISION   |                 |
| REVISION   |                 |
| REVISION   |                 |
| Rancroft & Martin Rolling Mills Company<br>Brewer, Maine<br>INT. #95 OVER RIVER ROAD<br>BENTON, MAINE<br>CUSTOMER: SEAWARD CONST. CO.<br>DESIGNER: STATE HIGHWAY COMM.<br>ORDER: VERBAL<br>DWG: B63-202-E1 |                 |







STRINGER DIAGRAM FOR SPlicing - SOUTHBOUND



STRINGER DIAGRAM FOR SPlicing - NORTHBOUND

NOTES

STEEL FOR STRINGERS, & SPlice RS. SHALL BE ASTM A36. ALL OTHER STEEL TO BE ASTM A36 OR A7.

BOLTS FOR SPlices SHALL BE ASTM A325, 3/8" HEX HEAVY STRUCT. BOLTS WITH HEAVY SEMI-FINISHED HEX NUTS & ONE HARDENED ROUND WASHER.

HOLES IN STRINGERS ARE FOR H.S. BOLTS. THEY ARE TO BE FREE FROM BURRS. THERE SHALL BE NO PAINT WITHIN 3" OF SUCH OPEN HOLES. SUB PUNCH OR DRILL 1 1/6"; REAM ASSEMBLED (NO TEMPLATES) PARTS TO 1/2" & OR DRILL FROM SOLID FOR FIELD CONNECTION. MATCHMARK ALL CONNECTING PARTS BEFORE DISASSEMBLING. SUPPLY ENGINEER WITH A DIAGRAM OF MATCHMARKS.

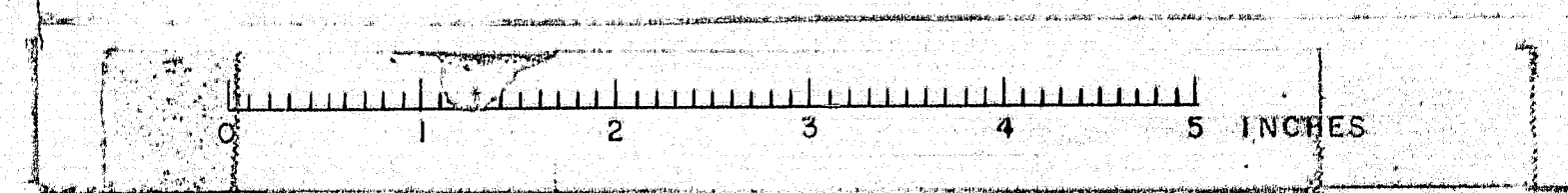
STRINGERS TO BE SET TO GRADE BEFORE DRILLING & REAMING SPlices.

SHOP CONNECTIONS: WELD (E70 ELECTRODE)  
FIELD CONNECTIONS: 3/8" H.S. BOLT  
HOLES: 1/2" &  
PAINT: STATE OF MAINE SPEC'S.

APP'D. 2-12-64

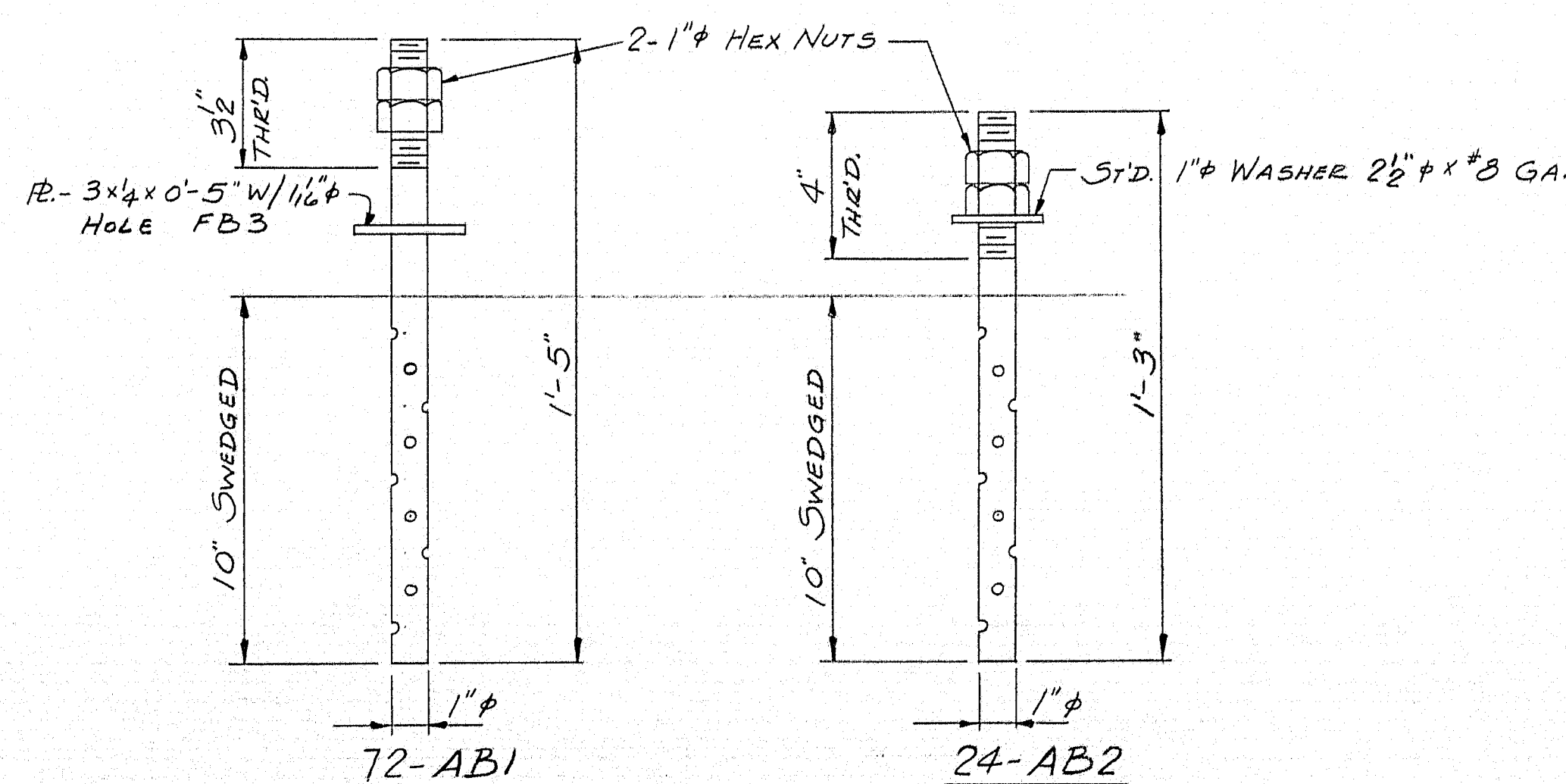
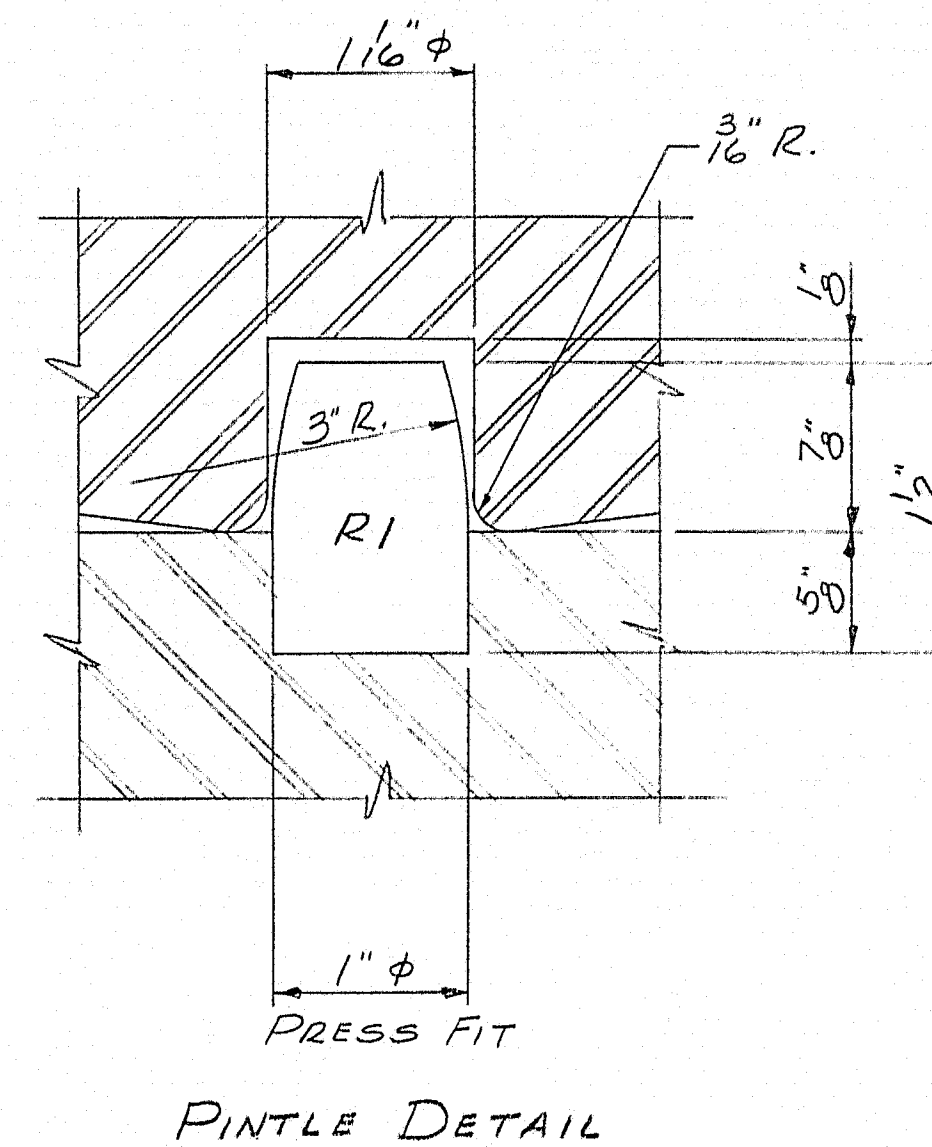
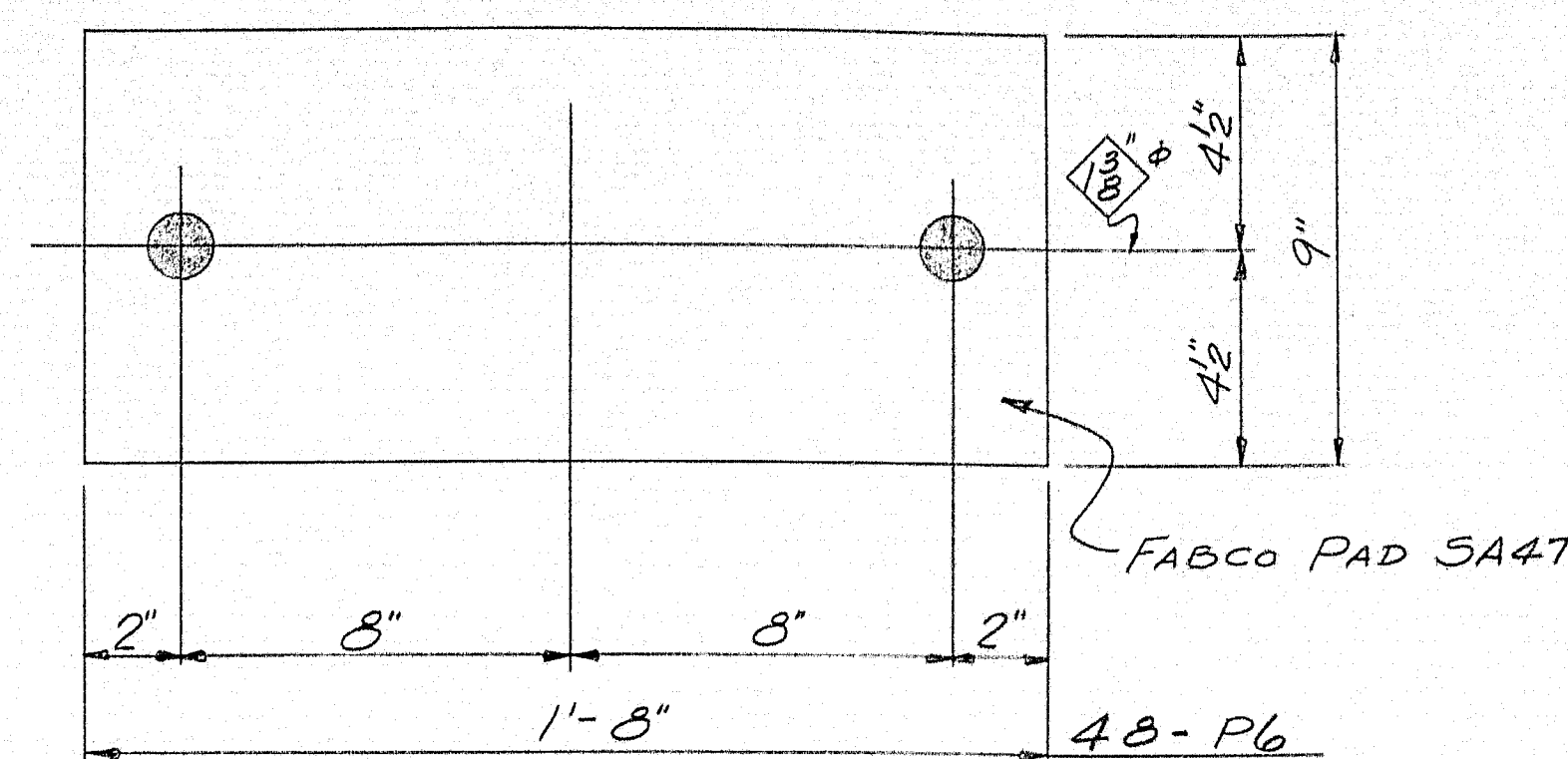
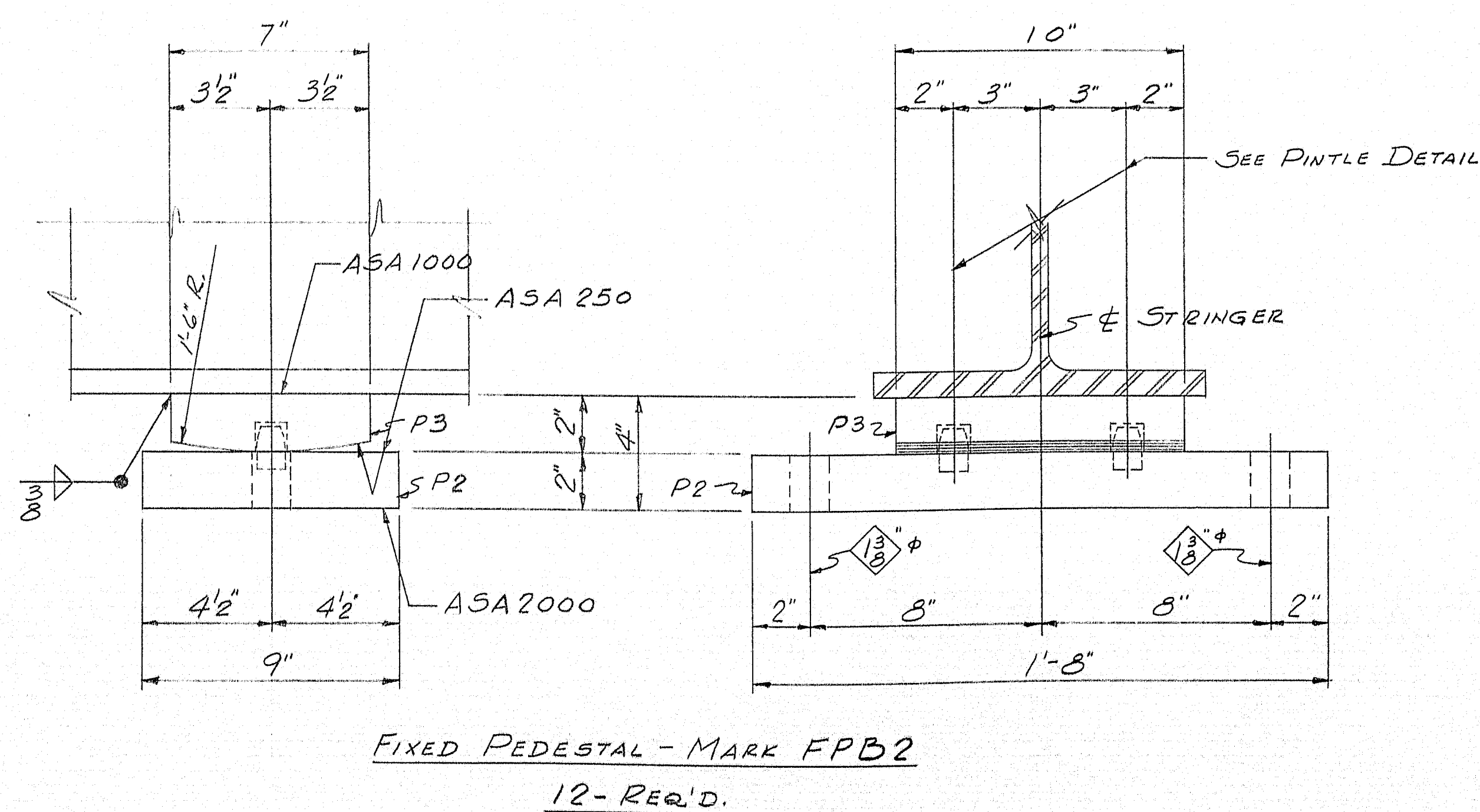
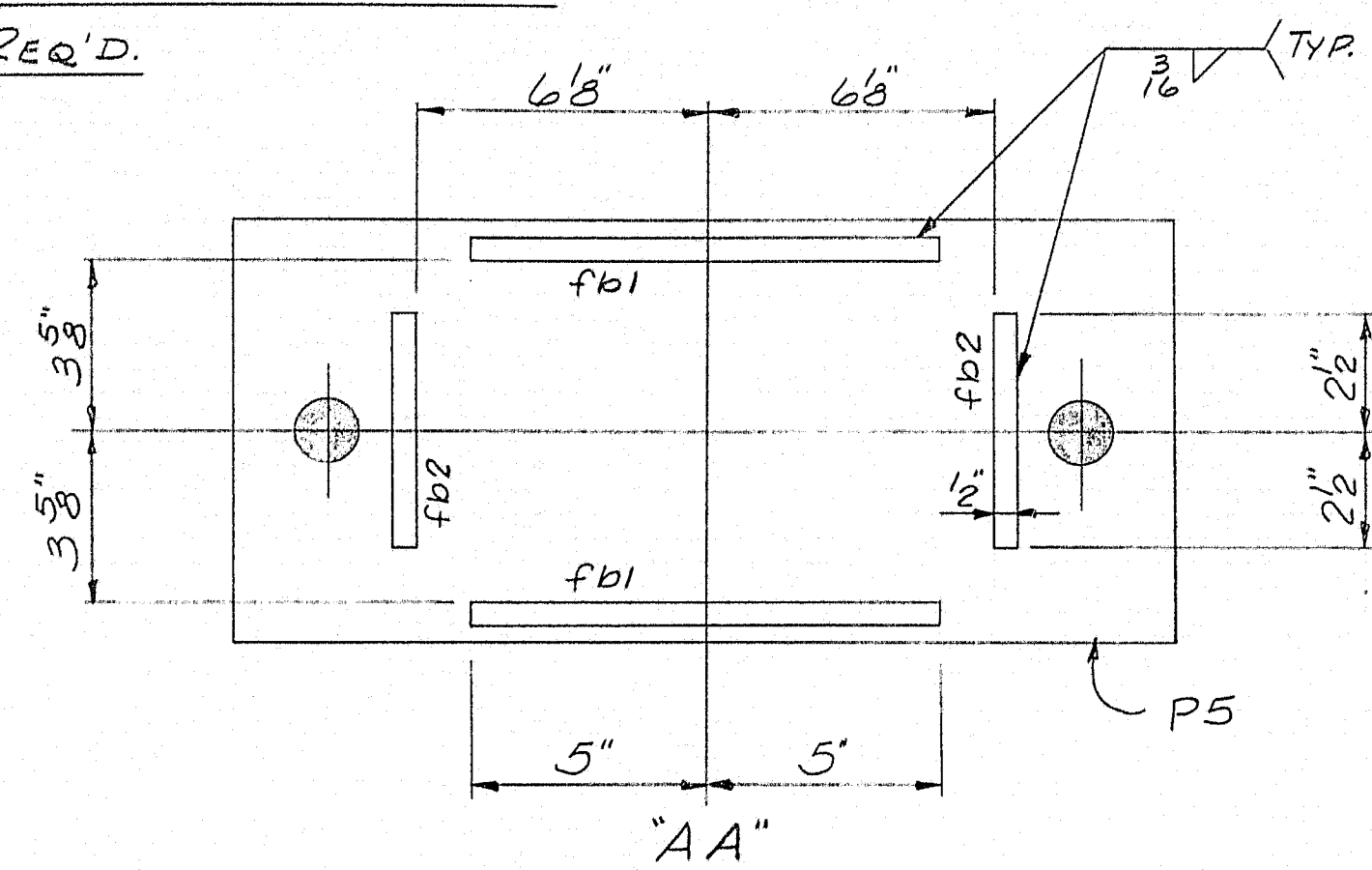
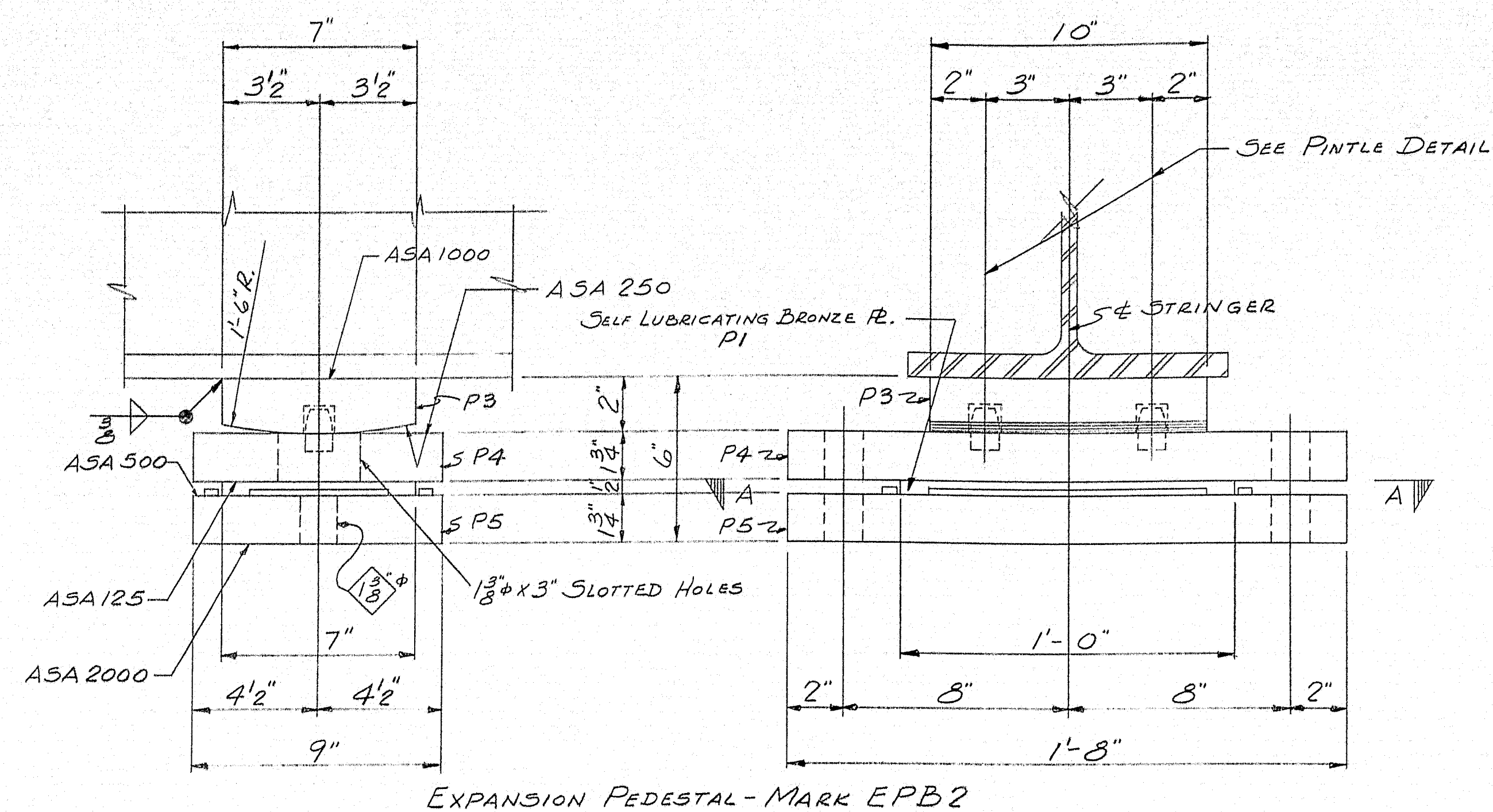
STRINGER DIAGRAMS FOR SOUTHBOUND & NORTHBOUND

| PRINT ISSUE |          |             | Bancroft & Martin Potting Mill Company<br>Brewer, Maine     |
|-------------|----------|-------------|---|
| NO.         | DATE     | DESCRIPTION |   |
| 3           | DIST     | 2-13-64     | INT. #95 OVER RIVER ROAD<br>BENTON, MAINE                   |
| 2           | SHOP     | 2-13-64     |   |
| 2           | F.A.     | 1-22-64     | CUSTOMER SEAWARD CONST. CO.<br>DESIGNER STATE HIGHWAY COMM. |
| DRAWN       | 12-27-63 | R.A.M.      |   |
| REVISION    |          |             | ORDER VERBAL  |
| REVISION    |          |             |   |
| REVISION    |          |             | DWG. B63-202-E2   |



90-29-D



[illegible]

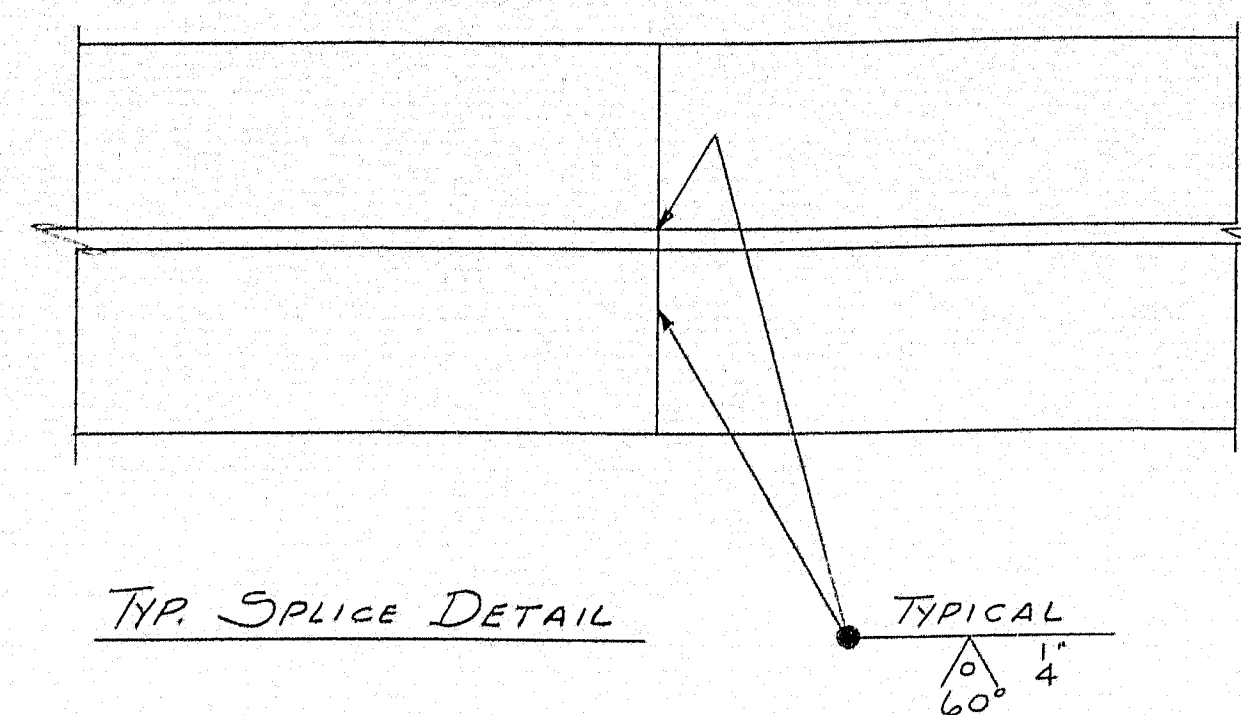
SHOP CONNECTIONS: WELD (E70 ELECTRODE)  
FIELD CONNECTIONS: WELD & BOLT  
HOLES: AS NOTED  
PAINT: STATE OF MAINE SPEC'S.

APP'D. 2-12-64

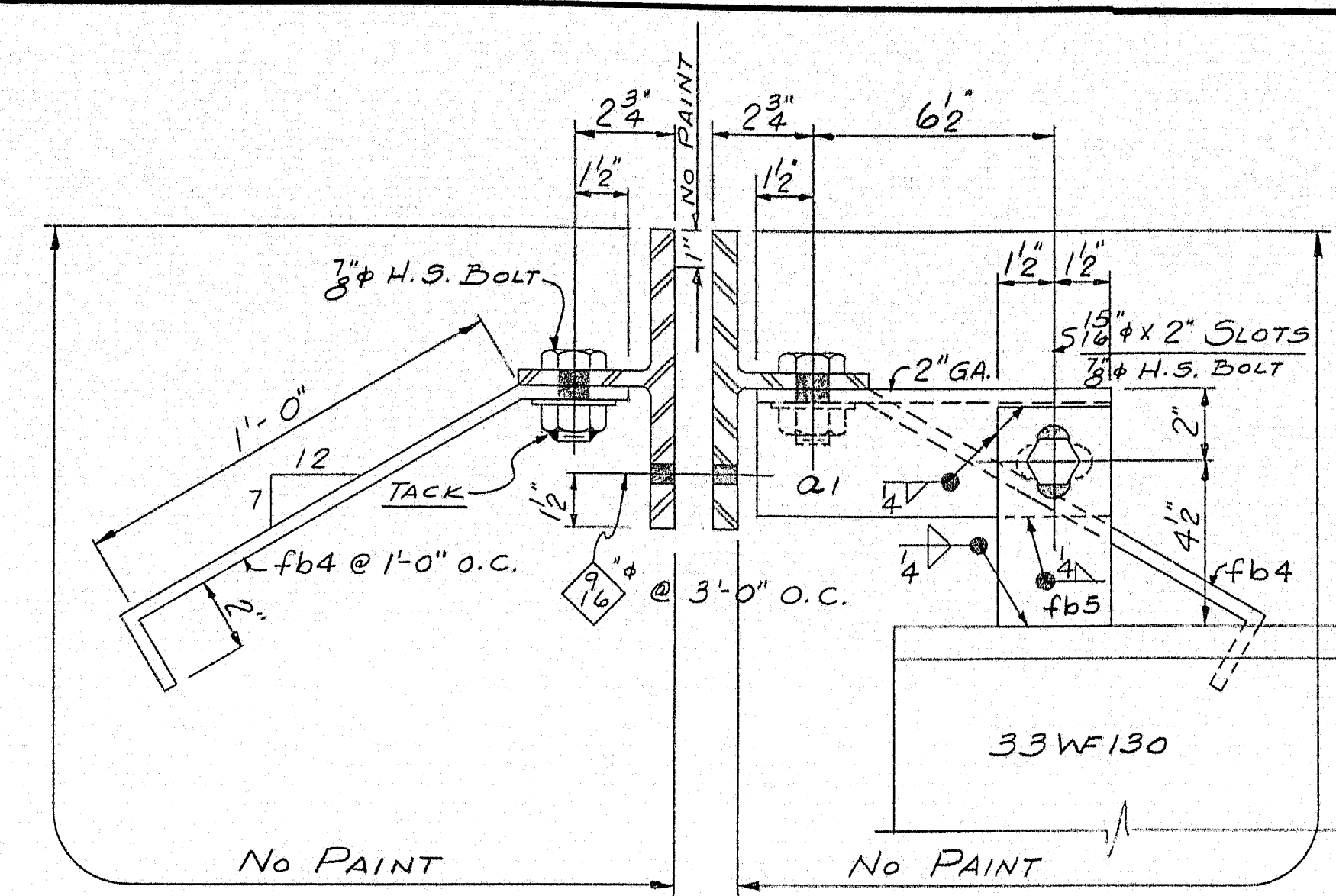
| BEARING DETAILS |       | PRINT ISSUE     |  |
|-----------------|-------|-----------------|--|
|                 |       |                 |  |
|                 |       |                 |  |
|                 |       |                 |  |
|                 |       |                 |  |
| 3               | DIST. | 2-13-64         |  |
| 4               | PORT  | 1-31-64         |  |
| 2               | F.A.  | 1-22-64         |  |
| DRAWN           |       | 1/230-63 R.A.M. |  |
| REVISION        |       |                 |  |
| REVISION        |       |                 |  |
| REVISION        |       |                 |  |

|   |                        |
|---|------------------------|
| Bancroft & Martin Inc.<br>Brewer, Maine                                   |                        |
| INT. #95 OVER RIVER ROAD<br>BENTON, MAINE                                 |                        |
| CUSTOMER <u>SEAWARD CONST. CO.</u><br>DESIGNER <u>STATE HIGHWAY COMM.</u> |                        |
| ORDER <u>VERBAL</u>   | DWG. <u>B63-202-51</u> |

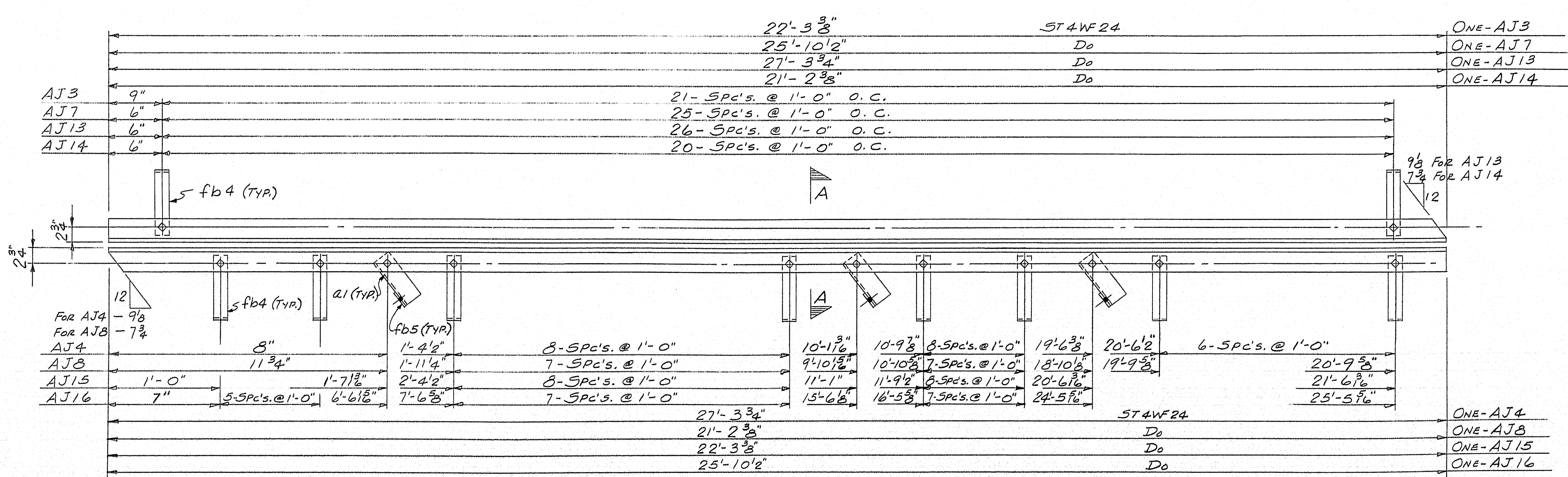
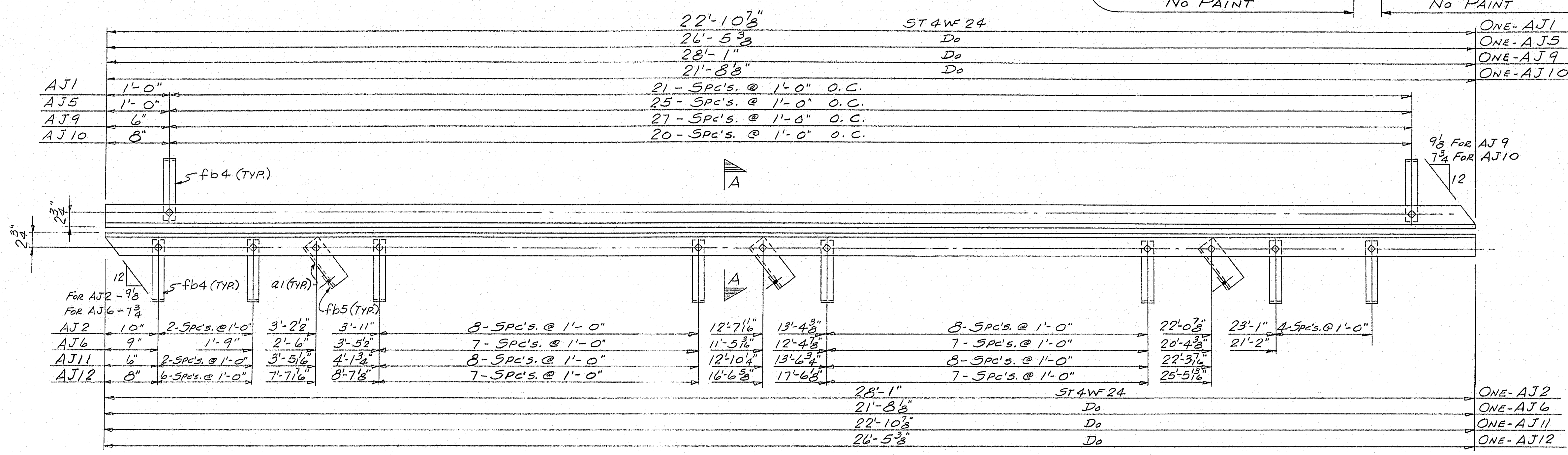




AA



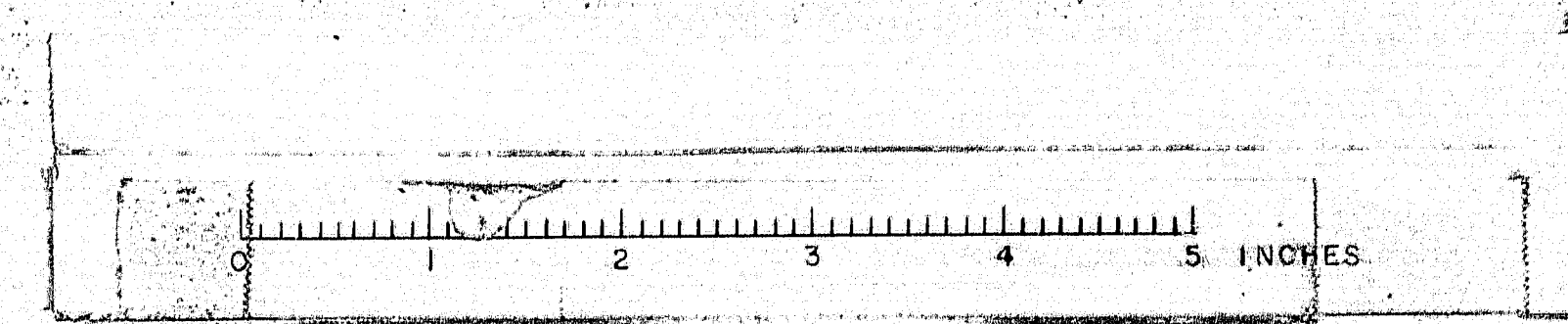
| SHIP |     | BILL OF MATERIAL |                    |            | DWG. B63-202-52 |                 |
|------|-----|------------------|--------------------|------------|-----------------|-----------------|
| MARK | NO. | MARK             | SHAPE              | LENGTH     | WT.             | REMARKS         |
| AJ1  | 1   |                  | ST4WF24            | 22'10 3/8" |                 | A7 or A36       |
| AJ2  | 1   |                  | Do                 | 28'1"      |                 |                 |
| AJ3  | 1   |                  | Do                 | 22'3 3/8"  |                 |                 |
| AJ4  | 1   |                  | Do                 | 27'3 3/4"  |                 |                 |
| AJ5  | 1   |                  | Do                 | 26'5 3/8"  |                 |                 |
| AJ6  | 1   |                  | Do                 | 21'8 3/8"  |                 |                 |
| AJ7  | 1   |                  | Do                 | 25'10 1/2" |                 |                 |
| AJ8  | 1   |                  | Do                 | 21'2 3/8"  |                 |                 |
|      | 24  | a1               | 3/4" x 3/4" x 3/4" | 0'9 1/2"   |                 |                 |
|      | 368 | fb4              | BAR-2 1/2 x 3/8"   | 1'5"       |                 | BENT            |
|      | 24  | fb5              | BAR-3 x 3/8"       | 0'6 1/2"   |                 |                 |
|      | 416 | SHOP             | 3/4" H.S. BOLT     | 0'24"      |                 | HEAVY NUTS A325 |
|      | 416 | DO               | 3/4" H.S. WASHER   |            |                 | A325            |
| AJ9  | 1   |                  | ST4WF24            | 28'1"      |                 | A7 or A36       |
| AJ10 | 1   |                  | Do                 | 21'8 3/8"  |                 |                 |
| AJ11 | 1   |                  | Do                 | 22'10 1/8" |                 |                 |
| AJ12 | 1   |                  | Do                 | 26'5 3/8"  |                 |                 |
| AJ13 | 1   |                  | Do                 | 27'3 3/4"  |                 |                 |
| AJ14 | 1   |                  | Do                 | 21'2 3/8"  |                 |                 |
| AJ15 | 1   |                  | Do                 | 22'3 3/8"  |                 |                 |
| AJ16 | 1   |                  | Do                 | 25'10 1/2" |                 |                 |



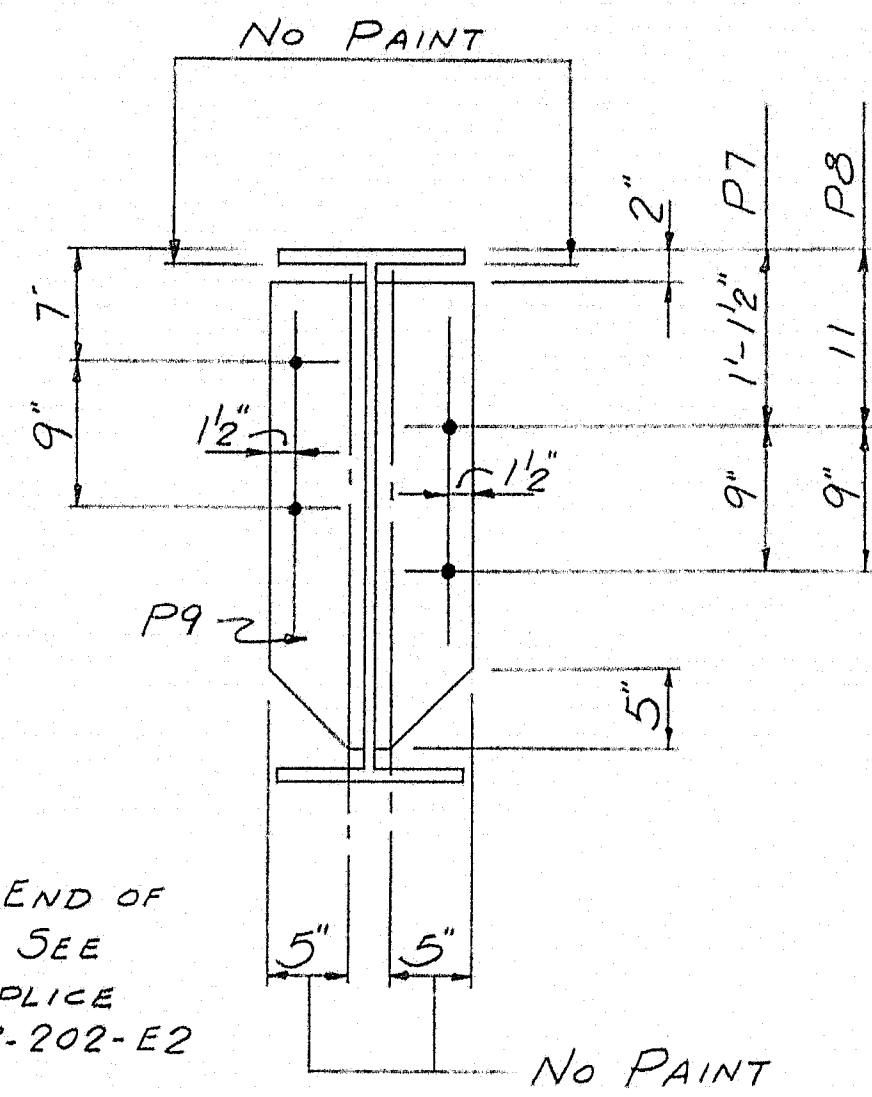
SHOP CONNECTIONS: 3/4" H.S. BOLT  
FIELD CONNECTIONS: WELD  
HOLES: 1/5" & U.N.  
PAINT: STATE OF MAINE SPEC'S.

APPD. AS NOTED

| ARMORED JOINTS FOR SOUTHBOUND & NORTHBOUND |                |   |   |
|--|----------------|---|---|
| PRINT ISSUE                                |                | Bancroft & Martin Inc.<br>Brewer, Maine |   |
| 3  | DIST.          | 2-13-64                                 | INT. #95 OVER RIVER ROAD<br>BENTON, MAINE |
| 5  | SHOP           | 2-6-64                                  |   |
| 5  | SHOP           | 2-3-64                                  |   |
| 2  | F.A.           | 1-22-64                                 | CUSTOMER SEAWARD CONST. CO.               |
| DRAWN                                      | 1-10-64 R.A.M. |   | DESIGNER STATE HIGHWAY COMM.              |
| REVISION                                   | 2-5-64 R.A.M.  |   |   |
| REVISION                                   |                |   |   |
| REVISION                                   |                |   |   |
| ORDER VERBAL                               |                | DWG. B63-202-52                         |   |

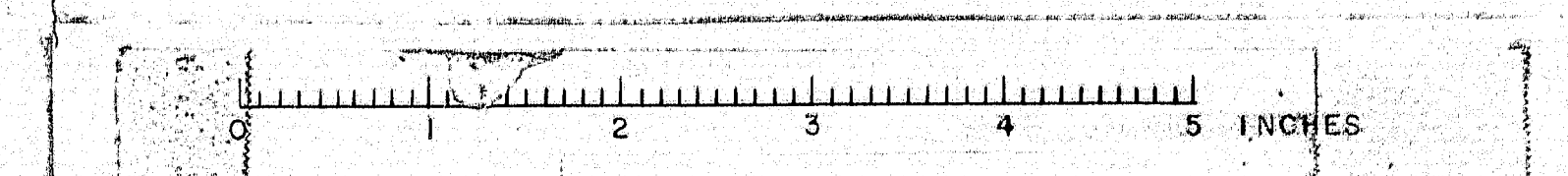




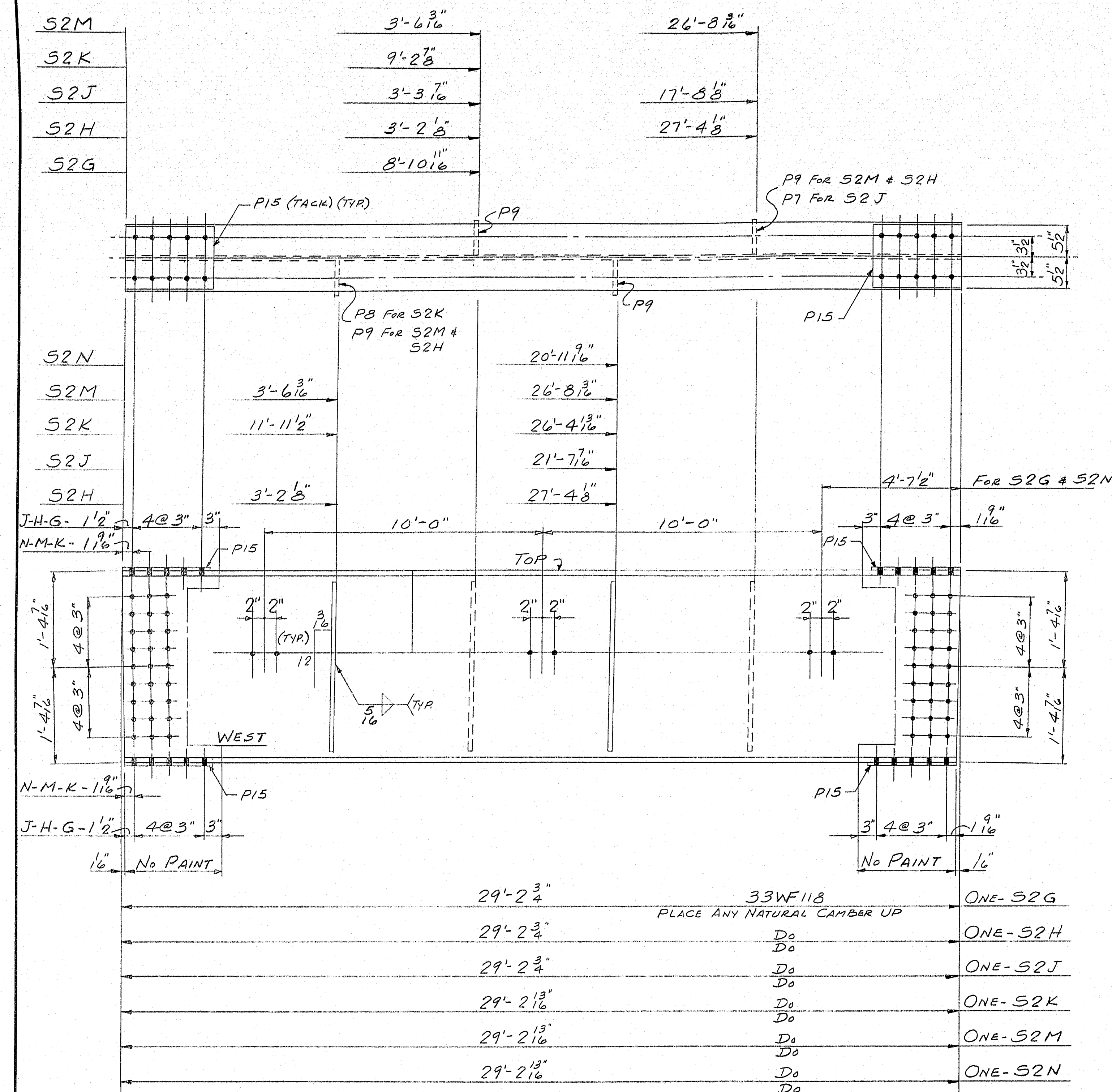


SHOP CONNECTIONS: WELD (E70 ELECTRODE)  
FIELD CONNECTIONS: WELD &  $\frac{7}{8}$ " H.S. BOLT  
HOLES:  $\frac{15}{16}$ "  $\phi$   
PAINT: STATE OF MAINE SPEC'S.

|   |                |   |   |  |  |
|---|----------------|---|---|--|--|
| <i>APP'D. AS NOTED 2-12-64</i>          |                |   |   |  |  |
| <i>STRINGERS - SPAN #1 - SOUTHBOUND</i> |                |   |   |  |  |
| PRINT ISSUE                             |                | <i>Bancroft &amp; Martin Inc.</i><br><i>Brewer, Maine</i> |   |  |  |
|   |                |   |   |  |  |
|   |                |   |   |  |  |
|   |                |   |   |  |  |
|   |                |   |   |  |  |
| <i>3</i>                                | <i>DIST.</i>   | <i>2-13-64</i>  | INT. #95 OVER RIVER ROAD<br>BENTON, MAINE |  |  |
| <i>5</i>                                | <i>SHOP</i>    | <i>2-13-64</i>  |   |  |  |
| <i>2</i>                                | <i>F.A.</i>    | <i>1-22-64</i>  |   |  |  |
| DRAWN                                   | 1-13-64 R.A.M. |   |   |  |  |
| REVISION                                |                |   |   |  |  |
| REVISION                                |                |   |   |  |  |
| REVISION                                |                |   |   |  |  |
|   |                | CUSTOMER <i>SEAWARD CONST. Co.</i>                        |   |  |  |
|   |                | DESIGNER <i>STATE HIGHWAY COMM.</i>                       |   |  |  |
|   |                | ORDER <i>VERBAL</i>                                       | DWG. <i>B63-202-S3</i>                    |  |  |

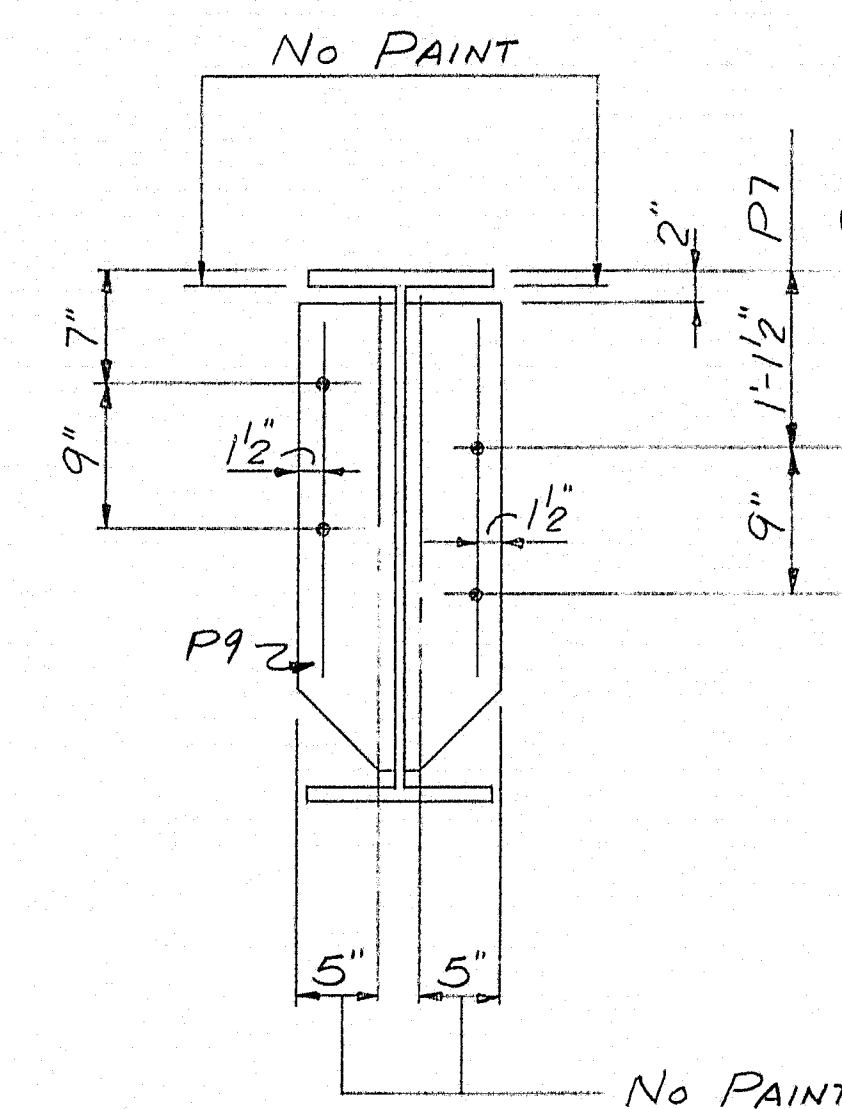






MATCH THIS END WITH EAST END OF STRINGERS S1G THRU S1N. SEE DRWG. #B63-202-E1 FOR SPLICE DRILLING. SEE DRWG. #B63-202-E2 FOR ELEVATION DIAGRAM.

MATCH THIS END WITH WEST END OF STRINGERS S3G THRU S3N. SEE DRWG. #B63-202-E1 FOR SPLICE DRILLING. SEE DRWG. #B63-202-E2 FOR ELEVATION DIAGRAM.

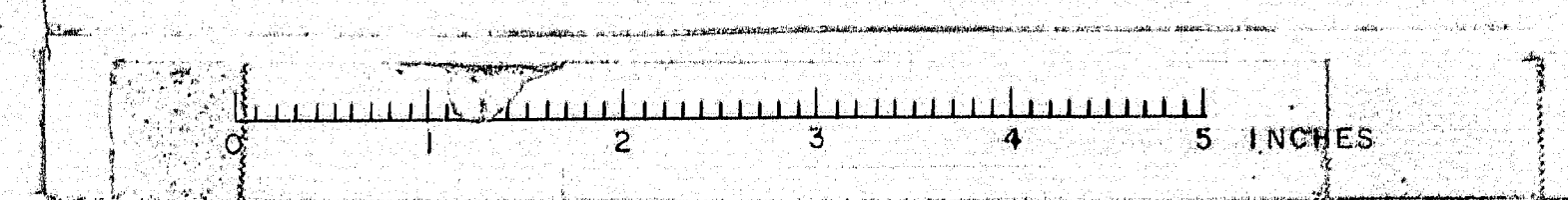


| SHIP |     | BILL OF MATERIAL |          |                         |     | DWG. B63-202-54 |
|------|-----|------------------|----------|-------------------------|-----|-----------------|
| MARK | NO. | MARK             | SHAPE    | LENGTH                  | WT. | REMARKS         |
| 52G  | 1   |                  | 33WF118  | 29' 2 $\frac{3}{4}$ "   |     | A36             |
| 52H  | 1   |                  | D $\phi$ | 29' 2 $\frac{3}{4}$ "   |     |                 |
| 52J  | 1   |                  | D $\phi$ | 29' 2 $\frac{3}{4}$ "   |     |                 |
| 52K  | 1   |                  | D $\phi$ | 29' 2 $\frac{13}{16}$ " |     |                 |
| 52M  | 1   |                  | D $\phi$ | 29' 2 $\frac{13}{16}$ " |     |                 |
| 52N  | 1   |                  | D $\phi$ | 29' 2 $\frac{13}{16}$ " |     |                 |
|      | 1   | P7               | P. 6x3   | 2 5                     |     | A7 or A36       |
|      | 1   | P8               | D $\phi$ | 2 5                     |     |                 |
|      | 14  | P9               | D $\phi$ | 2 5                     |     |                 |
|      | 24  | P15              | P. 11x3  | 1 3                     |     | A36             |

SHOP CONNECTIONS: WELD (E70 ELECTRODE)  
FIELD CONNECTIONS: WELD #3 & H.S. BOLT  
HOLES: 15" &  
PAINT: STATE OF MAINE SPEC'S.

APP'D. AS NOTED 2-12-64

| STRINGERS - SPAN #2 - SOUTHBOUND          |  |  |
|---|--|--|
| PRINT ISSUE                               |  |  |
| Bancroft & Martin Inc.<br>Brewer, Maine   |  |  |
| INT. #95 OVER RIVER ROAD<br>BENTON, MAINE |  |  |
| CUSTOMER SEAWARD CONST. CO.               |  |  |
| DESIGNER STATE HIGHWAY COMM.              |  |  |
| ORDER VERBAL DWG. B63-202-54              |  |  |



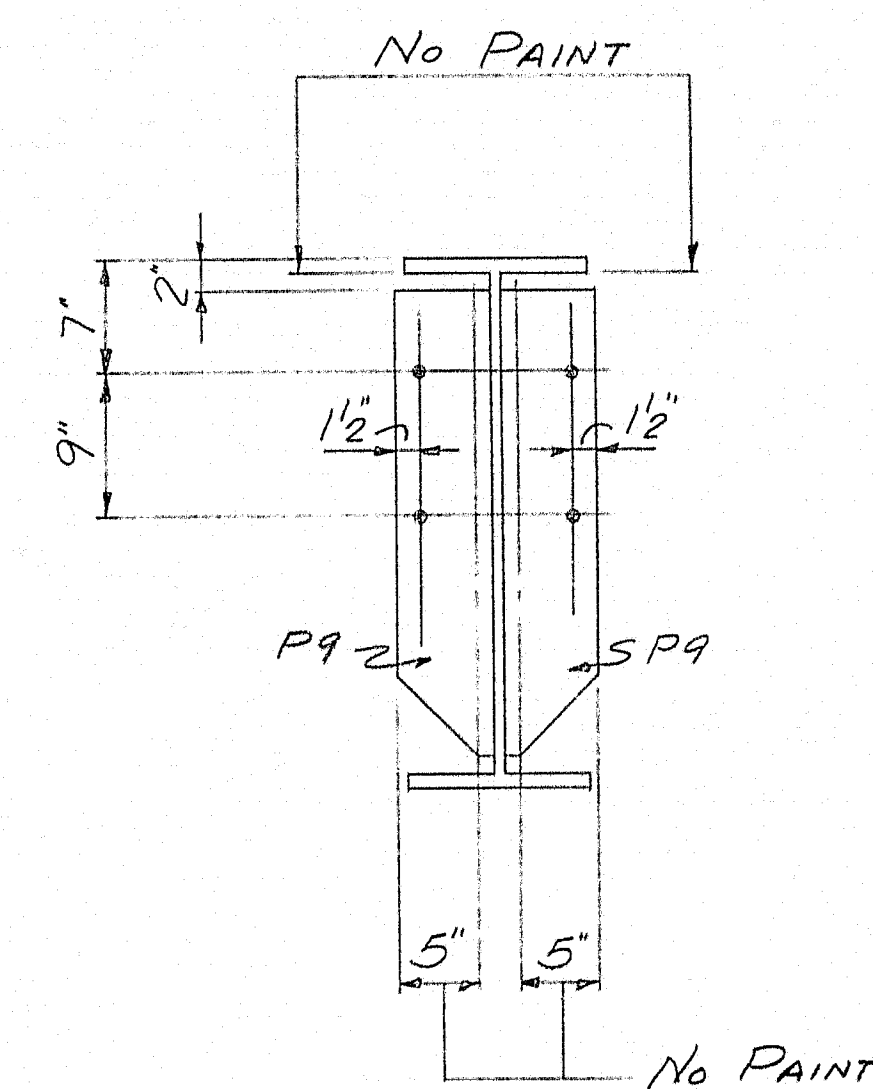
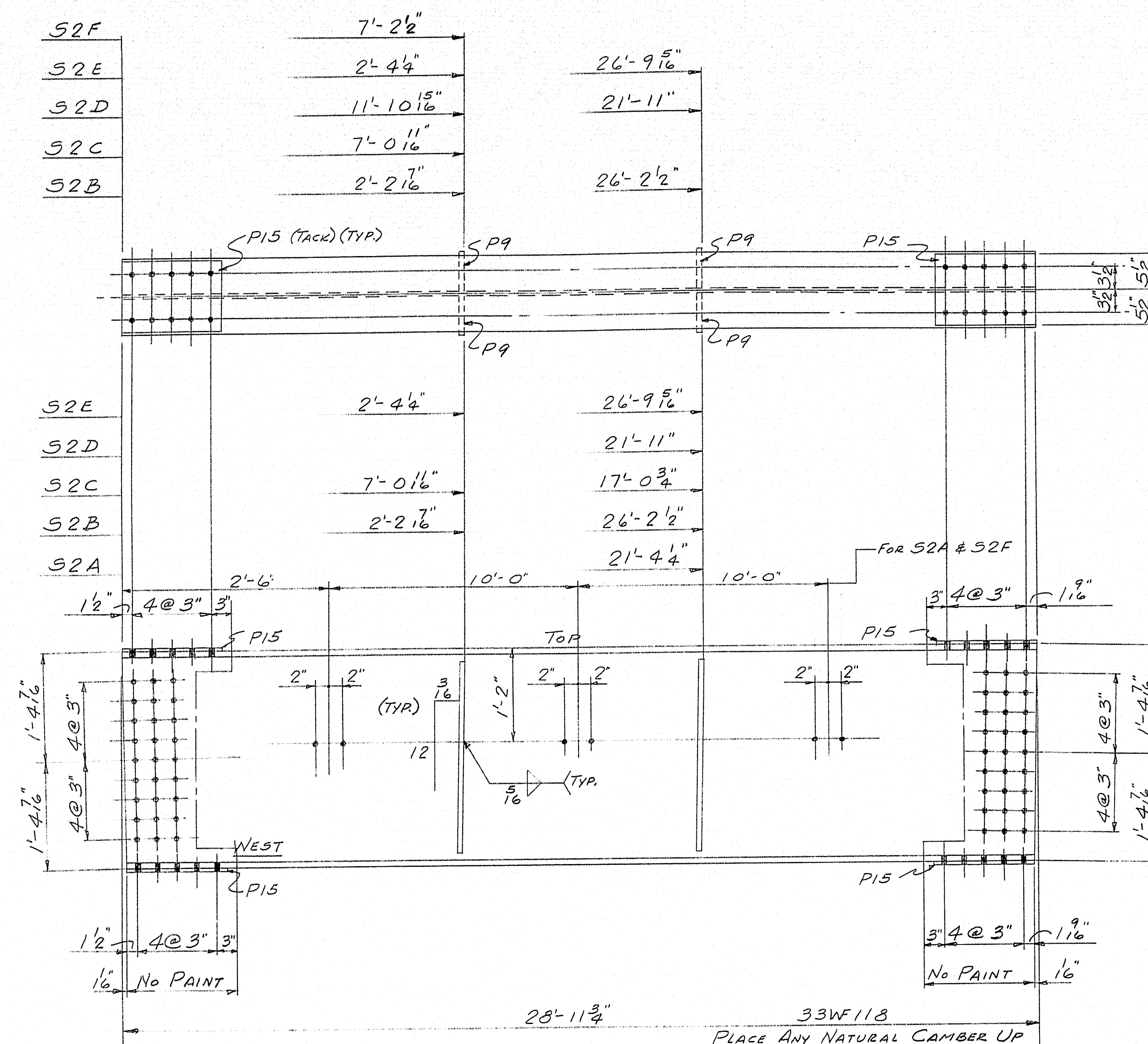












ONE - S2A  
ONE - S2B  
ONE - S2C  
ONE - S2D  
ONE - S2E  
ONE - S2F

| SHIP |     | BILL OF MATERIAL |             |             |     | DWG. B63-202-57 |
|------|-----|------------------|-------------|-------------|-----|-----------------|
| MARK | NO. | MARK             | SHAPE       | LENGTH      | WT. | REMARKS         |
| S2A  | 1   |                  | 33WF118     | 28' 11 3/4" |     | A36             |
| S2B  | 1   |                  | Do          | 28' 11 3/4" |     |                 |
| S2C  | 1   |                  | Do          | 28' 11 3/4" |     |                 |
| S2D  | 1   |                  | Do          | 28' 11 3/4" |     |                 |
| S2E  | 1   |                  | Do          | 28' 11 3/4" |     |                 |
| S2F  | 1   |                  | Do          | 28' 11 3/4" |     |                 |
|      | 16  | P9               | PL-6 x 3/8  | 2' 5"       |     | A7 or A36       |
|      | 24  | P15              | PL-11 x 3/8 | 1' 3"       |     | A36             |

SHOP CONNECTIONS: WELD (E70 ELECTRODE)  
FIELD CONNECTIONS: WELD # 3/8" H.S. BOLT  
HOLES: 1/8" φ  
PAINT: STATE OF MAINE SPEC'S.

APP'D. 2-12-64

STRINGERS - SPAN #2 - NORTHBOUND

| PRINT ISSUE          |       | Bancroft & Martin Inc.<br>Brewer, Maine |   |
|----------------------|-------|---|---|
| 3                    | DIST. | 2-13-64                                 | INT. #95 OVER RIVER ROAD<br>BENTON, MAINE                   |
| 5                    | SHOP  | 2-13-64                                 |   |
| 2                    | F.A.  | 1-22-64                                 | CUSTOMER SEAWARD CONST. CO.<br>DESIGNER STATE HIGHWAY COMM. |
| DRAWN 1-20-64 R.A.M. |       | ORDER VERBAL DWG. B63-202-57            |   |
| REVISION             |       |   |   |
| REVISION             |       |   |   |
| REVISION             |       |   |   |

